

Changzhou Haida Medical Equipment Company Ltd.

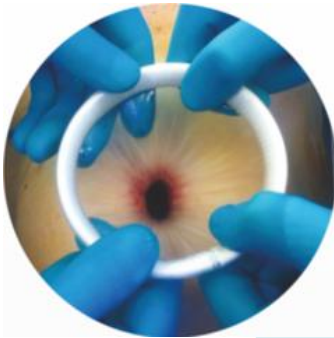
Sanhekou Industrial Zone Zhenglu Town, Wujin Dist. Changzhou City, Jisangsu Province, China

Tel:0086-519-88671868 Fax:+0086-519-88672999 www.surgical-stapler.com



Disposable Wound Protector/Retractor

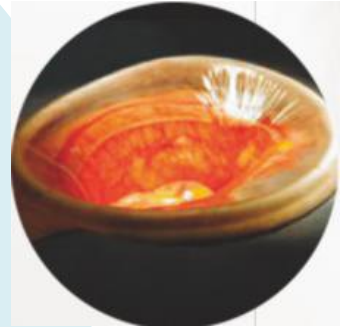
Features



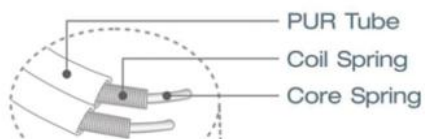
※Applicable to small incision surgery and minimally invasive surgery, easy to operate

※Retract the incision by greatest degree, provide a clear operative field

※Effectively ease postoperative wound pain caused by metal retractors oppression and congestion



※Operative Incision under uniform tension reduces tissue damage. Effectively prevent incision from bleeding and reduce incision infection.



Changzhou Haida Medical Equipment Company Ltd.

Sanhekou Industrial Zone Zhenglu Town, Wujin Dist. Changzhou City, Jisangsu Province, China

Tel:0086-519-88671868 Fax:+0086-519-88672999 www.surgical-stapler.com

[Product show]



Product code, specifications and parameters

(Select a wound retractor with popper specification according to various surgery requirements)

Product Name	Code	Specifications	Implanting inner ring Diam.mm.	Outer Diam.mm.	Channel Diam.mm.	Channel length mm.	Applicable surgery
Wound Protector/Retra	HRA (Changeable height)	60/70-60/150	70	60	60	150	Thoracic surgery small incision surgery; Appendicitis surgery
		80/90-80/150	90	80	80	150	Pneumoperitoneum laparoscopic colon, rectal, splenectomy
		120/130-120/250	130	120	120	250	Open surgery of

Changzhou Haida Medical Equipment Company Ltd.

Sanhekou Industrial Zone Zhenglu Town, Wujin Dist. Changzhou City, Jisangsu Province, China

Tel:0086-519-88671868 Fax:+0086-519-88672999 www.surgical-stapler.com

		150/160-150/250	160	150	150	250	stomach, intestine, and liver		
		170/180-170/170	180	170	170	170			
		180/190-180/250	190	180	180	250			
				180/190-180/150	190	180	180	150	
				220/230-220/250	230	220	220	250	Caesarean section, gynecological tumor surgery
				270/280-270/250	280	270	270	250	Thoracotomy
				320/330-320/250	330	320	320	250	
HRB (fixed height)		40/30-15/20	40	30	15	20	Thoracoscopic lens hole		
		50/40-15/20	50	40	15	20	Thoracoscopic operation hole		
		50/40-25/25	50	40	25	25	Thoracoscopic operation hole		
		50/40-25/40	50	40	25	40			
		50/60-25/5	50	60	25	5			
		60/50-25/30	60	50	25	30			
		60/50-25/25	60	50	25	25			
		60/50-25/50	60	50	25	50			
		60/60-25/25	60	60	25	25			
		60/60-35/40	60	60	35	40			
		70/60-35/50	70	60	35	50	Thoracoscopic operation hole		
		70/70-35/25	70	70	35	25			
		70/70-35/30	70	70	35	30			
		70/70-35/40	70	70	35	40			
		70/150-60/5	70	150	60	5			
		100/50-35/50	100	50	35	50			
		100/50-40/5	100	50	40	5			
		100/120-60/50	100	120	60	50			
		120/100-60/25	120	100	60	25			
		120/120-60/25	120	120	60	25			
	120/100-60/40	120	100	60	40				
	120/120-60/40	120	120	60	40				
	120/100-60/70	120	100	60	70				
		150/70-60/5	150	70	60	5			
		150/70-60/50	150	70	60	50			